

IBIOLA Mobility Solutions GmbH



3rd World Collaborative Mobility Congress 2015 FishCamp I: IS THERE ROOM FOR NEWCOMERS?

IBIOLA Mobility Solutions GmbH
Mag. Robert Reithofer

About us



- Founded in 2011
- Started Austria's leading peer-to-peer Carsharing platform:
»carsharing24/7«
- Provider of a full-fledged Carsharing equipment (HW/SW):
»ibiola®«
- Promotor of electric mobility and e-Carsharing
- Partner, cooperation:



Motivation



- /// Efficient use of resources
 - /// Saving the environment
 - /// Develop technologies for shared mobility
 - /// Encourage people to change mobility behaviour
-
- /// Reduce stock of vehicles and use existing cars efficient
 - /// Rethink from fossil fuel to electric drive

carsharing24/7



- Peer-to-peer Carsharing platform
- Private cars are shared between individuals
- Comprehensive insurance for drivers and renters
- 10.000 users and 600 vehicles
- Infrastructure
 - carsharing247.com + iPhone/Android App
 - Community incl. rating of users
 - Online tools: calculator, calendar, logbook, accounting, ...
 - Document folder with contract, driver's logbook, ...



B2B-Activities



Carsharing hosted in

- Housing Areas
- Companies („Corporate Carsharing“)
- Cities, communities and rural regions

Carsharing provided by

- Building contractor and property management
- Company's fleet management
- Community, club or “outsourcing”/ external providers (e.g. Europcar)



ibiola®: Hardware



- /// (e)Carsharing-Kit (CAN-Bus reading)
- /// M2M-SIM onBoard
- /// NFC Reader (Mifare Standard)
- /// Anonymised data transfer (Privacy Seal)
- /// Floating car data in real-time

AMV®System

"Zertifiziert für die
datenschutzkonforme
Übermittlung von
Fahrzeugechtzeitdaten"



ibiola®: Software



/// Carsharing OS (Firmware, Whitelist, ETL, DWH)

/// Backend

- Customers
- Vehicles
- Fleet(s)
- Bookings
- Pricing
- Logbook
- NFC-Cards
- Frontend configuration
- Monitoring & tracking
- Payment accounts
- Accounting and billing

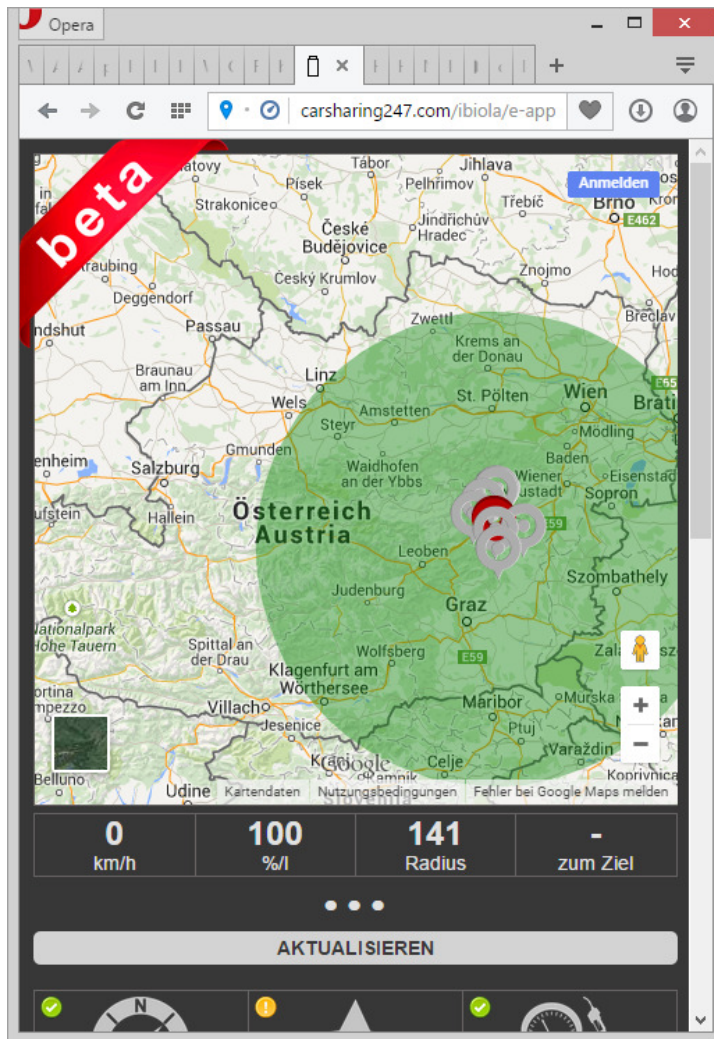


/// Frontend (booking via desktop or mobile)

/// Reporting (statistics, analysis, reports)

/// Features: whitelabel/branding, clients, roles, multilingual, ...

Insight R&D: e-App^{BETA} (1)



Insight R&D: *e-App*^{BETA} (2)



Distance reach measurement for *e*-cars

- Coming soon: topology- and weather-dependent

Navigation to local charging stations for *e*-cars

Planning routes and charging stations enroute for *e*-cars

- „Vision“: reservation of specific charging stations

„Goodies“ for *e*-cars

- Charging status in real-time
- Car's status display (car locked, windows closed, battery, ...)
- Automatically updated directory of appropriate charging stations for other *e*-car drivers.
- Much more coming soon!

Awards & Nominations



Contact



Robert Reithofer

- Tel: +43 664 5212913
- E-Mail: r.reithofer@ibiola-mobility.com

Website

- <http://ibiola-mobility.com>